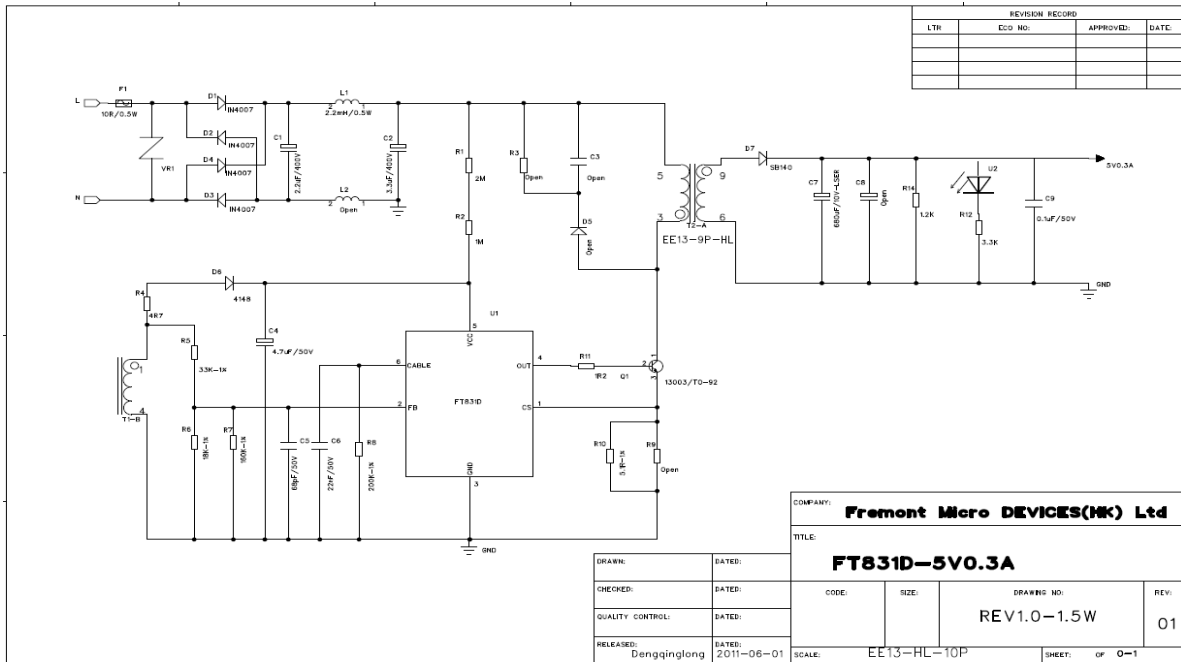


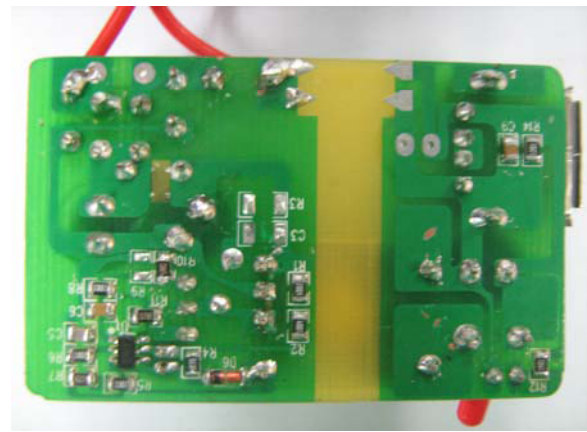
1.5W Charger For Electronic Smoker

| Spec | Application | Product | Efficiency | Input Range |
|----------------|----------------|---------------|------------|------------------|
| 5V300mA | Charger | FT831D | 66% | 90~265VAC |

Key Features:

- Primary side regulation without Opto-Coupler and TL431
- AC input range: 90~265VA
- High efficiency: 66%
- Pass energy Star EPS 2.0 (64.71%)
- ±5% constant voltage (CV) regulation
- Pass EN55022 Class B with enough margin
- No load dissipation less then 0.1W
- Operational temperature range: -5°C ~ 40°C
- High reliability guaranteed by built-in multi-protection functions (OVP, OLP & Short circuit protection)





Testing data:

* Data measured at cable end (0.3 ohm)

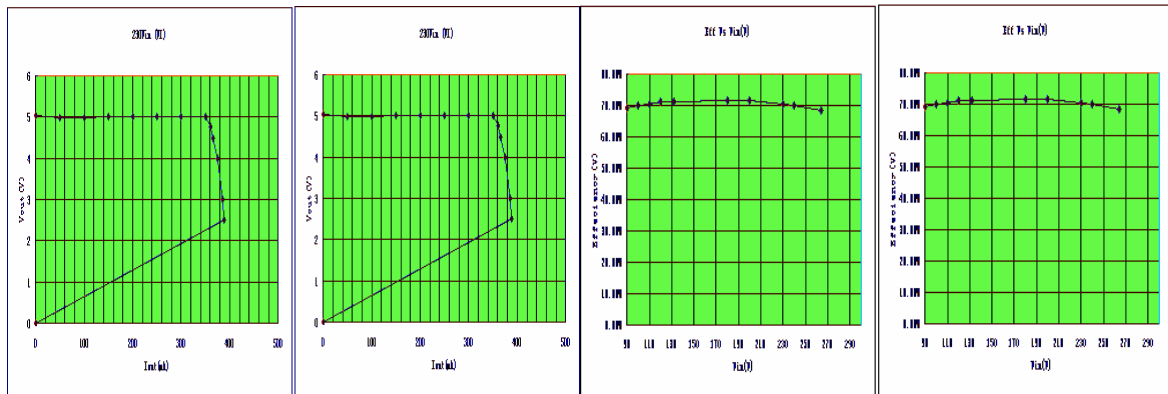


Fig1. Output IV curve

Fig 2. Efficiency vs input voltage